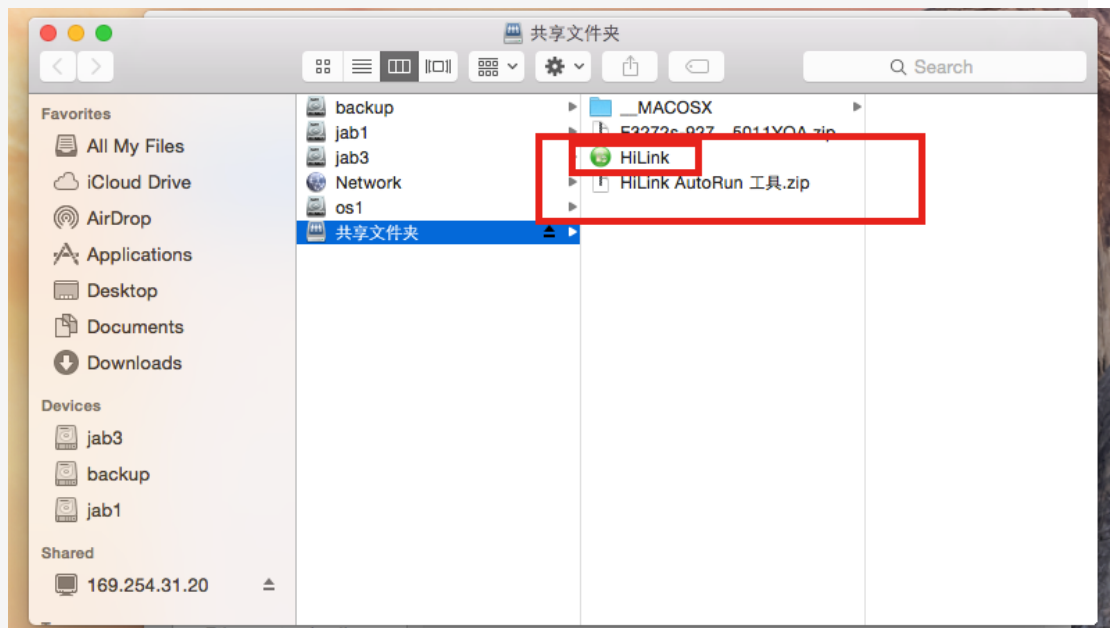
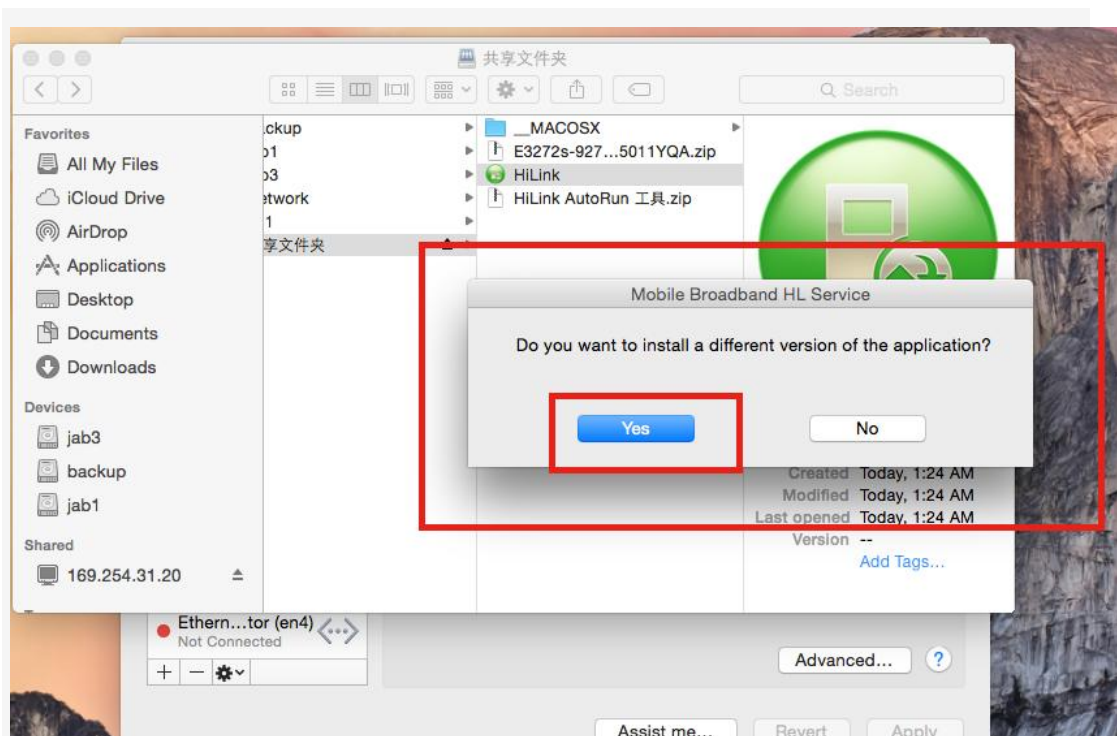


Hilink AutoRun tool install user manual

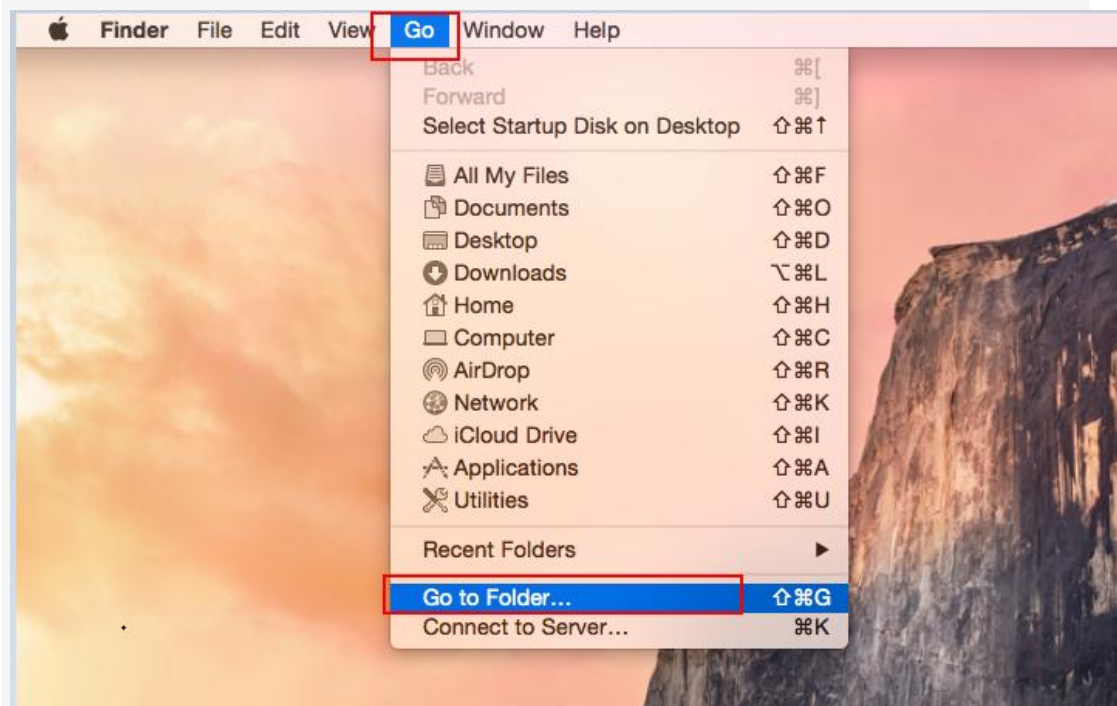
1、Unzip the folder of Hilink AutoRun tool , it will pop-up a window like below.

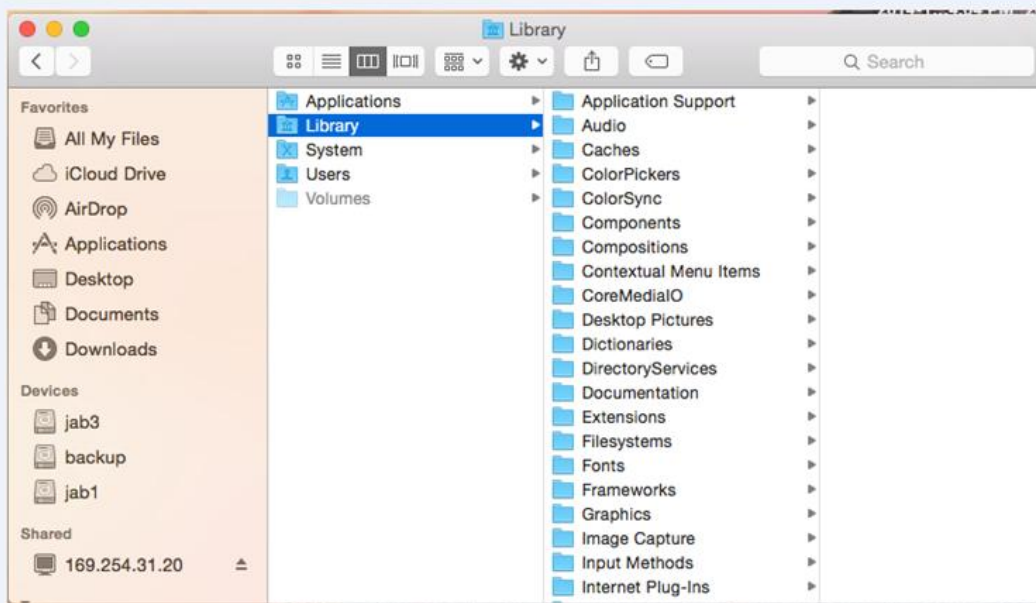
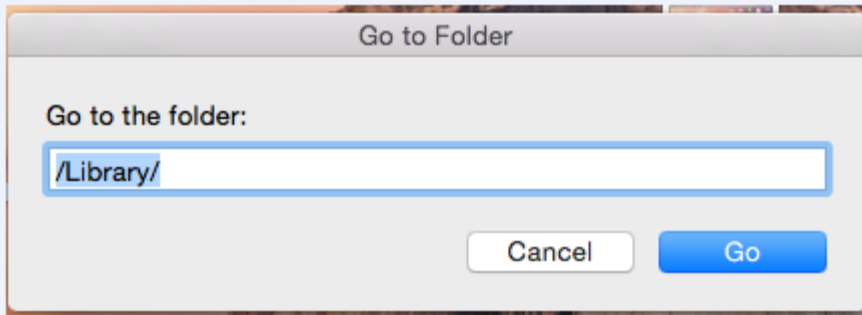


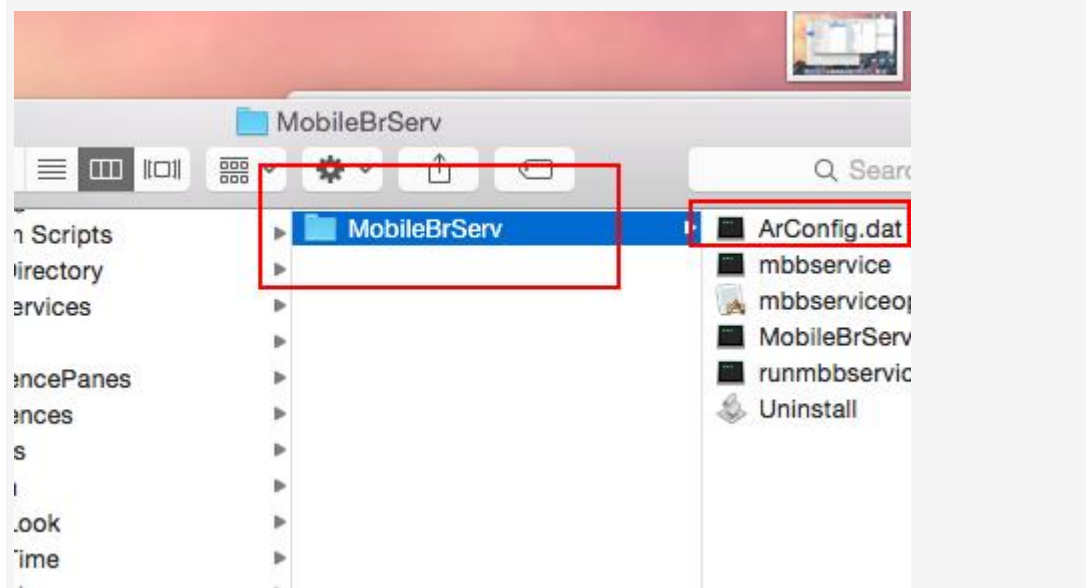
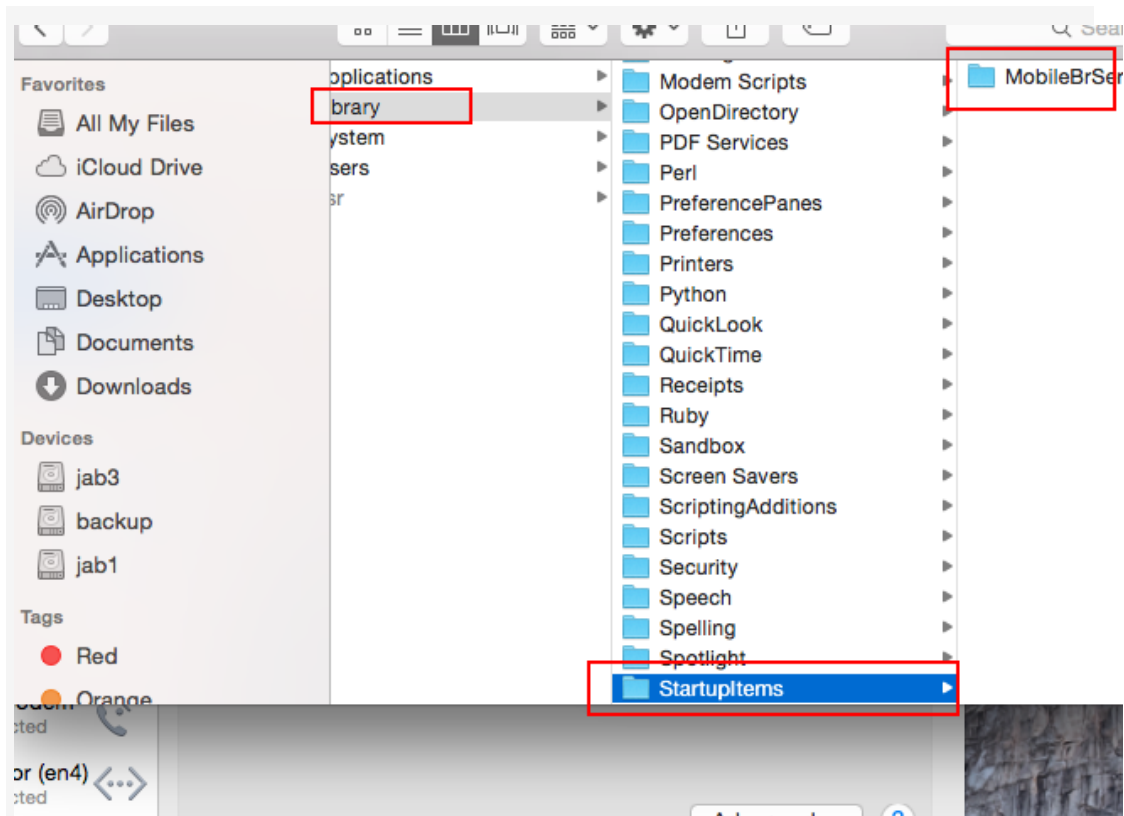
2、Double-click the icon of **Hilink**, it will pop-up a window like below.

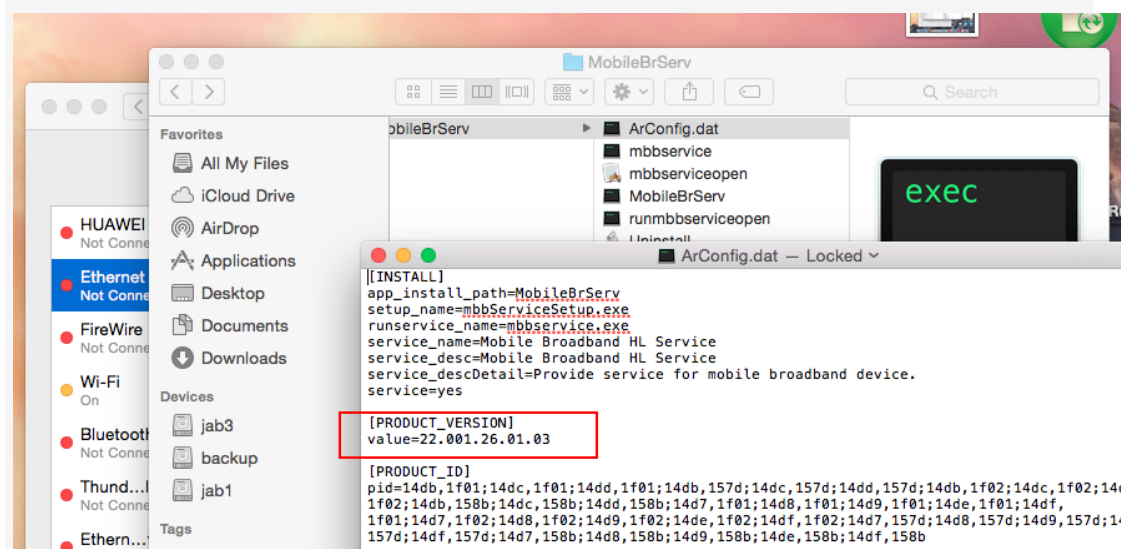
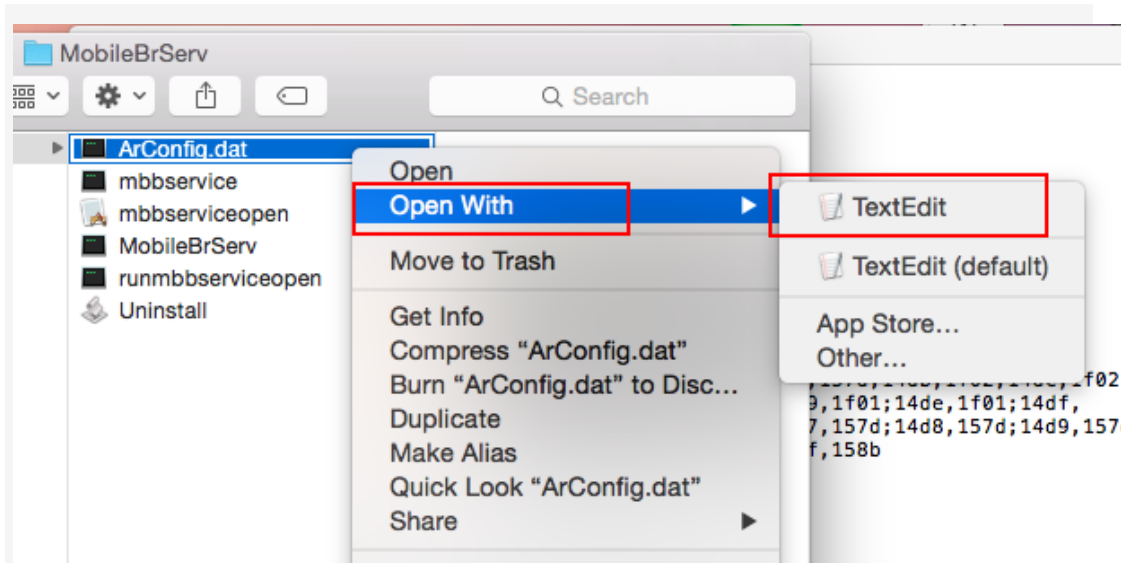


3、 Click ‘yes’, and it will install Automatically .but you can check whether it install Successfully, do the next operation.









If the version is change for 22.001.26.01.03 , it prove the Hilink AutoRun tool install Successfully.