

Go To setting

The screenshot shows a web browser window displaying the Huawei mobile WiFi management interface. The browser's address bar shows the URL `192.168.8.1/html/home.html`. The page header includes the Huawei logo and navigation tabs: Home, Statistics, SMS, USSD, Update, **Settings**, Sharing, and App Management. The 'Settings' tab is highlighted with a red box. The main content area features a 'TashiCell' section with a bar chart and the text '4G' and 'Connected'. Below this are three panels: 'Current connection' showing 'Received/Sent: 2.65 MB / 100.26 KB' and 'Duration: 00:04:54'; 'WLAN status' showing 'WLAN status: On' and 'Current WLAN user: 1'; and 'Sharing' with a 'View SD Files' button. The footer contains 'Privacy Policy', '(C) 2006-2016 HUAWEI TECHNOLOGIES CO., LTD.', and 'Open Source Notice'.

File Edit View History Bookmarks Tools Help

Mobile WiFi

192.168.8.1/html/home.html

Help admin Log Out

HUAWEI

Home Statistics SMS USSD Update **Settings** Sharing App Management

TashiCell

4G

Connected
[Connection Settings](#)

Current connection

Received/Sent: 2.65 MB / 100.26 KB
Duration: 00:04:54

WLAN status

WLAN status: On
Current WLAN user: 1

Sharing

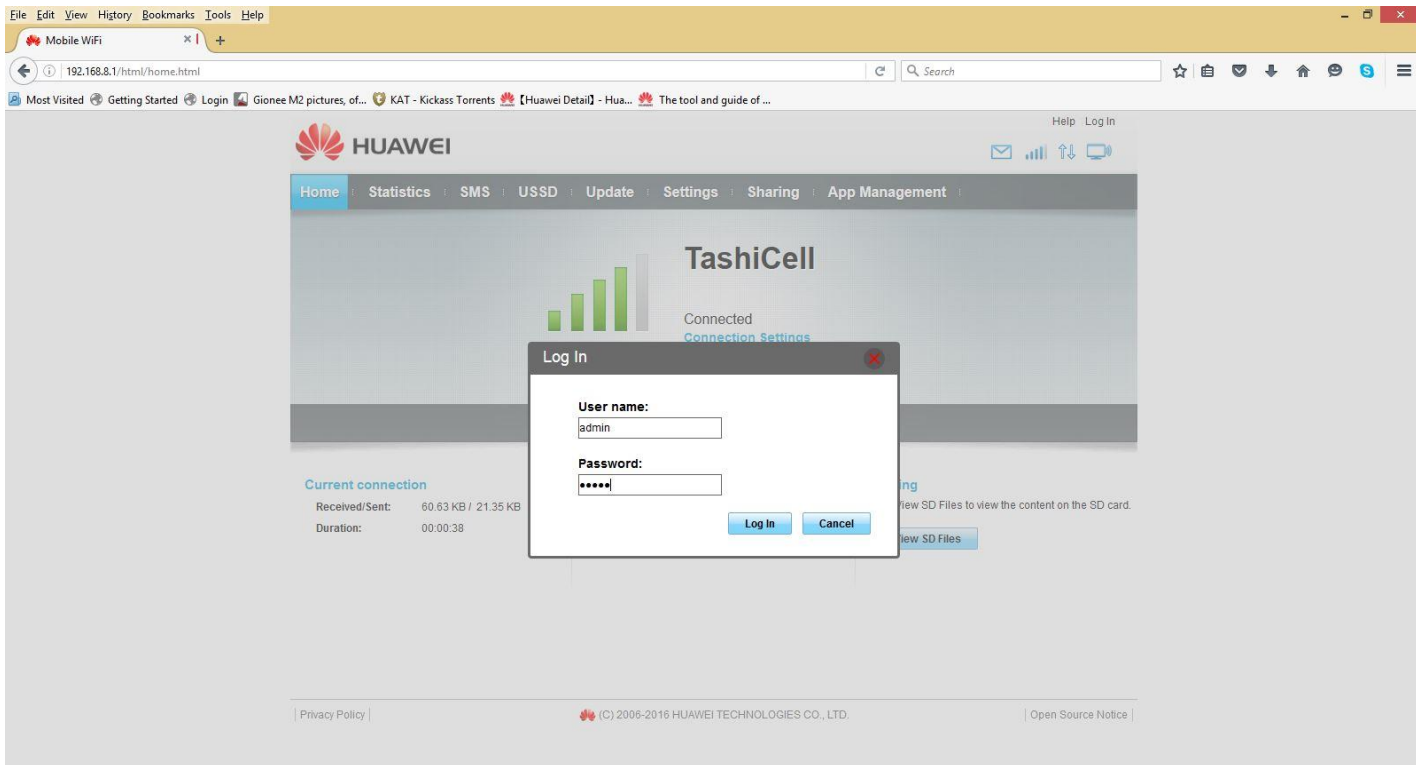
Click View SD Files to view the content on the SD card.

[View SD Files](#)

Privacy Policy | (C) 2006-2016 HUAWEI TECHNOLOGIES CO., LTD. | Open Source Notice

User Name: admin

Password: admin



Click WLAN

File Edit View History Bookmarks Tools Help

Mobile WiFi

192.168.8.1/html/quicksetup.html

Help admin Log Out

HUAWEI

Home Statistics SMS USSD Update Settings Sharing App Management

Quick Setup

Dial-up

WLAN

WLAN Basic Settings

WLAN Advanced Settings

WLAN MAC Filter

WPS Settings

DHCP

Security

System

Configure Profile Settings Step 1 of 2

Profile name: TashiCell wifi(default)

User name: admin

Password:

APN: t3cnnet

New Profile Next

Privacy Policy (C) 2006-2016 HUAWEI TECHNOLOGIES CO., LTD. Open Source Notice

Under WLAN, Click WLAN Basic Setting

File Edit View History Bookmarks Tools Help

Mobile WiFi x | +

192.168.8.1/html/wlanbasicsettings.html

Help admin Log Out

HUAWEI

Home Statistics SMS USSD Update Settings Sharing App Management

Quick Setup

Dial-up

WLAN

WLAN Basic Settings

WLAN Advanced Settings

WLAN MAC Filter

WPS Settings

DHCP

Security

System

WLAN Basic Settings

WPS cannot be used if Security mode is set to WEP.
If Security mode is set to WEP, a wireless network adapter working only in 802.11n mode may not be able to access the device.

WLAN module: Enable Disable

SSID: Tashicell wifi **To Change WiFi Name**

Security mode: WPA2-PSK

WPA pre-shared key: **To Change WiFi Password**

Show password

SSID Broadcast: Enable Disable

Note: If SSID broadcast is disabled, you must enter a valid SSID to connect to a Wi-Fi network. For details, see the [Help](#).

Apply

Privacy Policy | (C) 2006-2016 HUAWEI TECHNOLOGIES CO., LTD. | Open Source Notice |